



## PARK FARM CLOSE, LONDON, N2

£500,000

\* VIRTUAL TOUR AVAILABLE \* Goldman Greg are delighted to offer this two double bedroom split level maisonette located on Park Farm Close, N2 in East Finchley with access to a communal lawned garden.

The first floor of this maisonette offers a modern open plan kitchen and reception room and the hallway offers excellent storage space for coats and shoes.

The second floor has two good sized double bedrooms with the master bedroom offering fitted wardrobes. There's also a fully tiled bathroom with shower suite and more storage space. You will also find spotlights throughout the entire property.

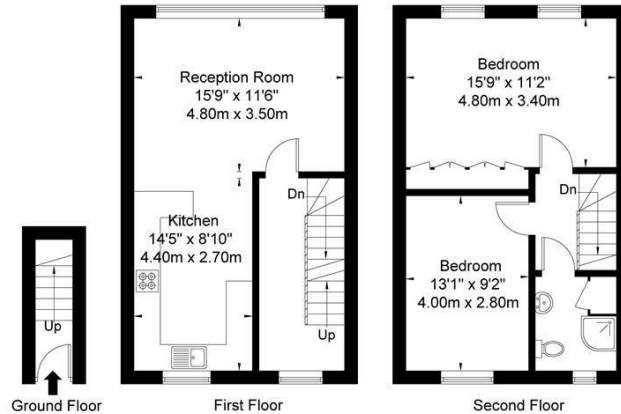
Park Farm Close is located within 0.6 miles of East Finchley Station and 0.9 miles to Finchley Central Station making this an ideal spot for commuters.



Goldman Greg

## Park Farm Close N2 0PU

Approx Gross Internal Area = 79.6 sq m / 856 sq ft



Ref

Copyright **BLEUPLAN**

The Floor plan is not to scale and measurements and areas shown are approximate and therefore should be used for illustrative purposes only. The plan has been prepared in accordance with the RICS code of Measuring Practice and whilst we have confidence in the information produced it must not be relied on. If there is any aspect of particular importance, you should carry out or commission your own inspection of the property.  
Copyright © BLEUPLAN



Energy Efficiency Rating		
	Current	Potential
Very energy efficient - lower running costs		
(92 plus) <b>A</b>		
(81-91) <b>B</b>		
(69-80) <b>C</b>		
(55-68) <b>D</b>		
(39-54) <b>E</b>		
(21-38) <b>F</b>		
(1-20) <b>G</b>		
Not energy efficient - higher running costs		
<b>England &amp; Wales</b>	EU Directive 2002/91/EC	

Agents Note: Whilst every care has been taken to prepare these particulars, they are for guidance purposes only. All measurements are approximate and are for general guidance purposes only and whilst every care has been taken to ensure their accuracy, they should not be relied upon and potential buyers/tenants are advised to recheck the measurements

Goldman Greg  
143 Leman Street  
London  
E1 8EY

02079770018  
leads@goldmangreg.co.uk  
www.goldmangreg.co.uk

